



## Log Cabin "DS" series 3.5×3

Project Dimensions

5.8 × 5.8 / 65 m<sup>2</sup>

Full house set

**11,048 €**

### Timber



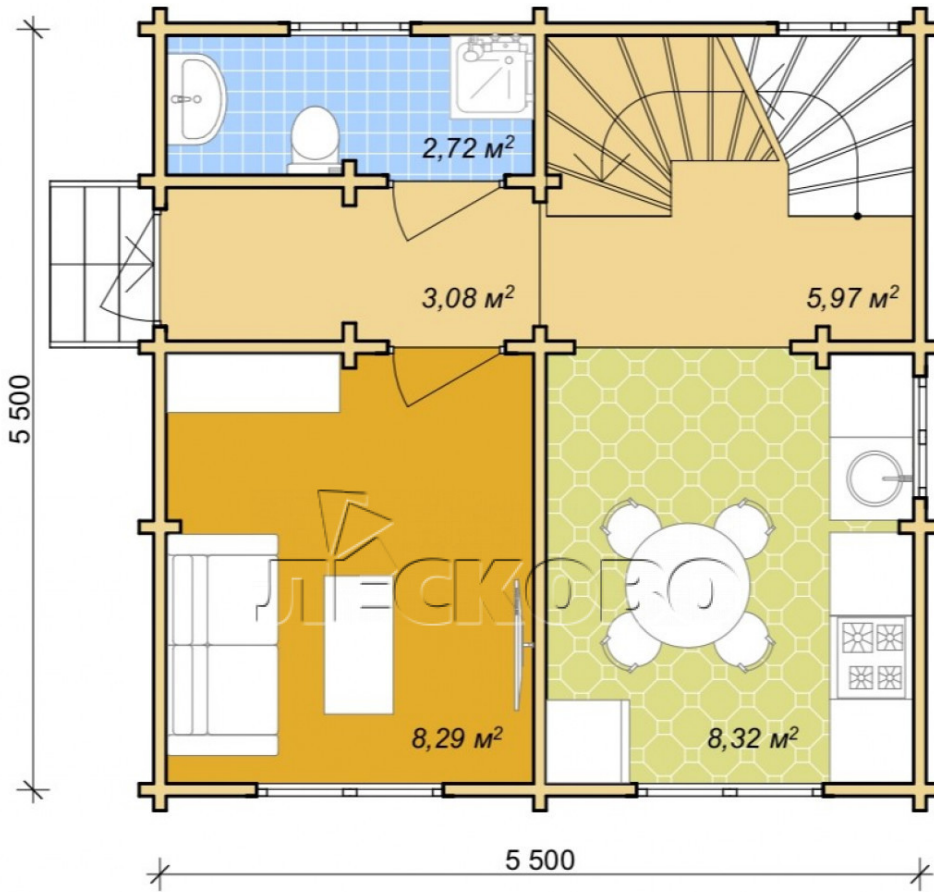
45 mm

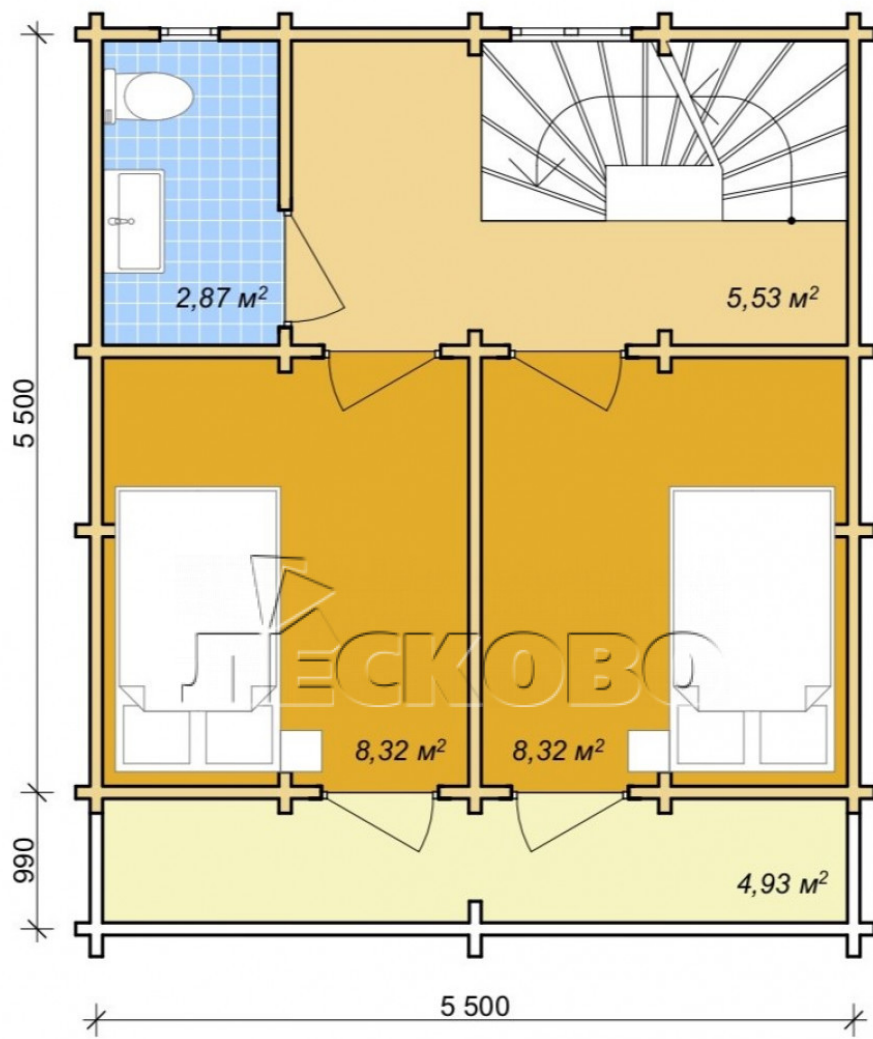


65 mm  
+ 3,192 €

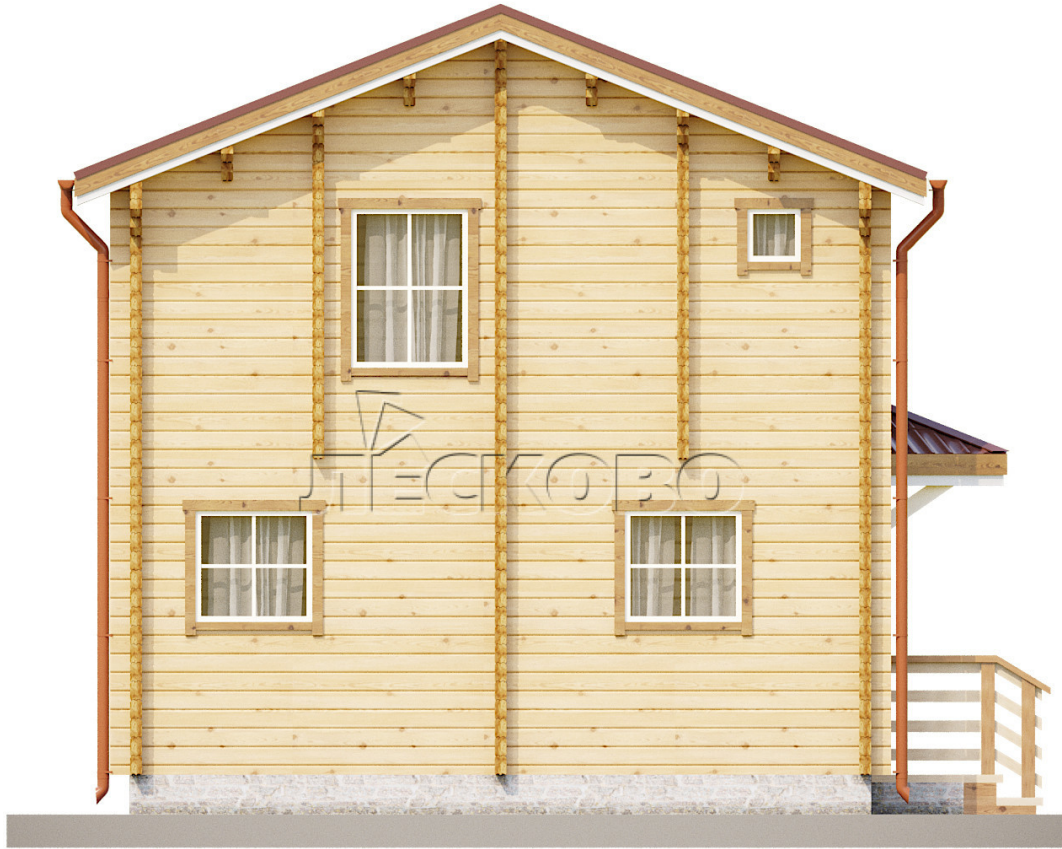
## Project planning

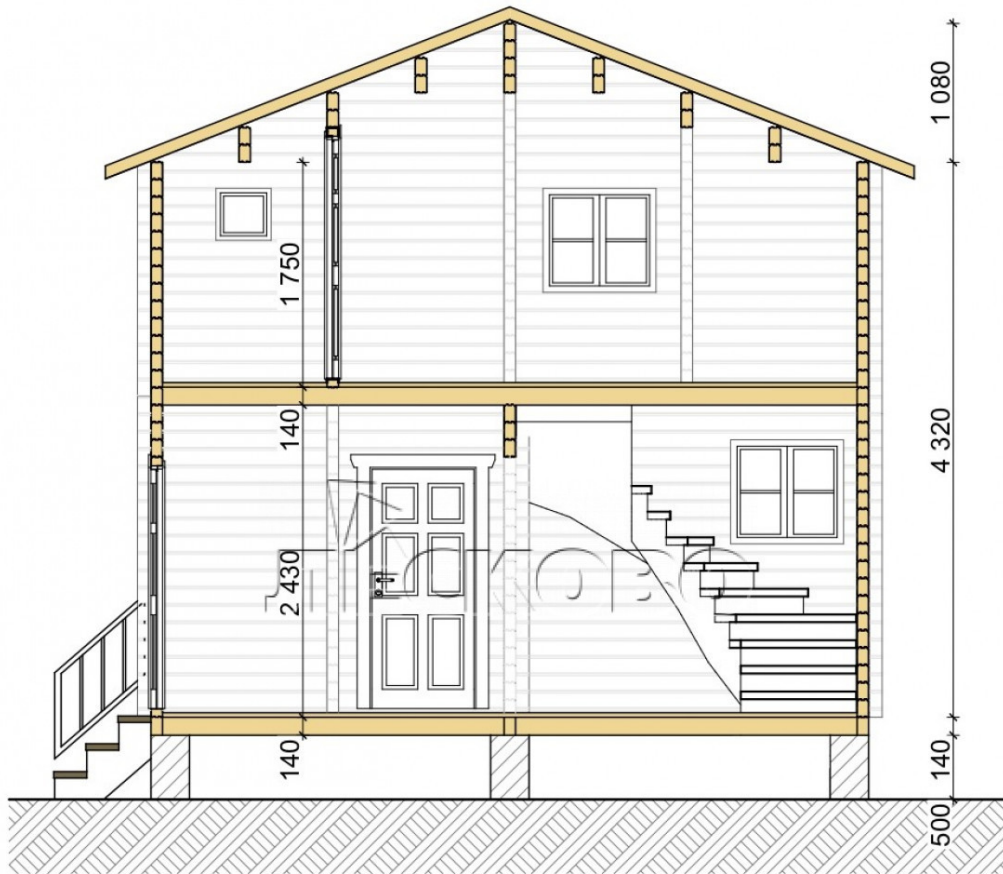












## House Kit

- Wall kit: 44 × 145mm mini-chamber drying chamber with bowls for the project. The material of the tree is spruce, pine (GOST 8486). Humidity 12-14%. The height of the walls is 2.16 m;
- Logs, lower harness: board 45 × 145 mm chamber drying 10-12%;
- Floors: floorboard 35 mm, Chamber drying;
- Ceiling: imitation of a bar 20 × 135 mm, Chamber drying;
- Wooden windows, glass 4 mm, Single. Treatment with a colorless antiseptic. Hardware;



Window 0.87×1.17 0.40×0.38 м.1 шт.  
м.1 шт.

0.87×0.78 м.3 шт.

1.34×0.91 м.2 шт.

- Wooden doors;



5 шт.

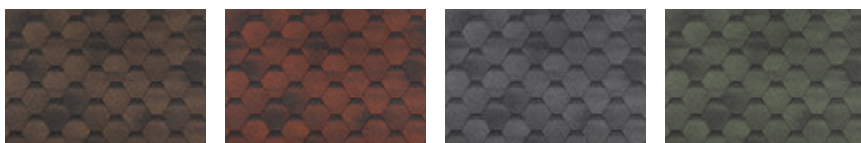


0.84×1.885 м.

glass.3 шт.

7. Platbands: dry planed board 20 × 100 mm;

8. Roof: shingles.



9. Skirting board 35 mm.

+7 (4942) 499-770

156014, г. Кострома, ул. Базовая, д. 8